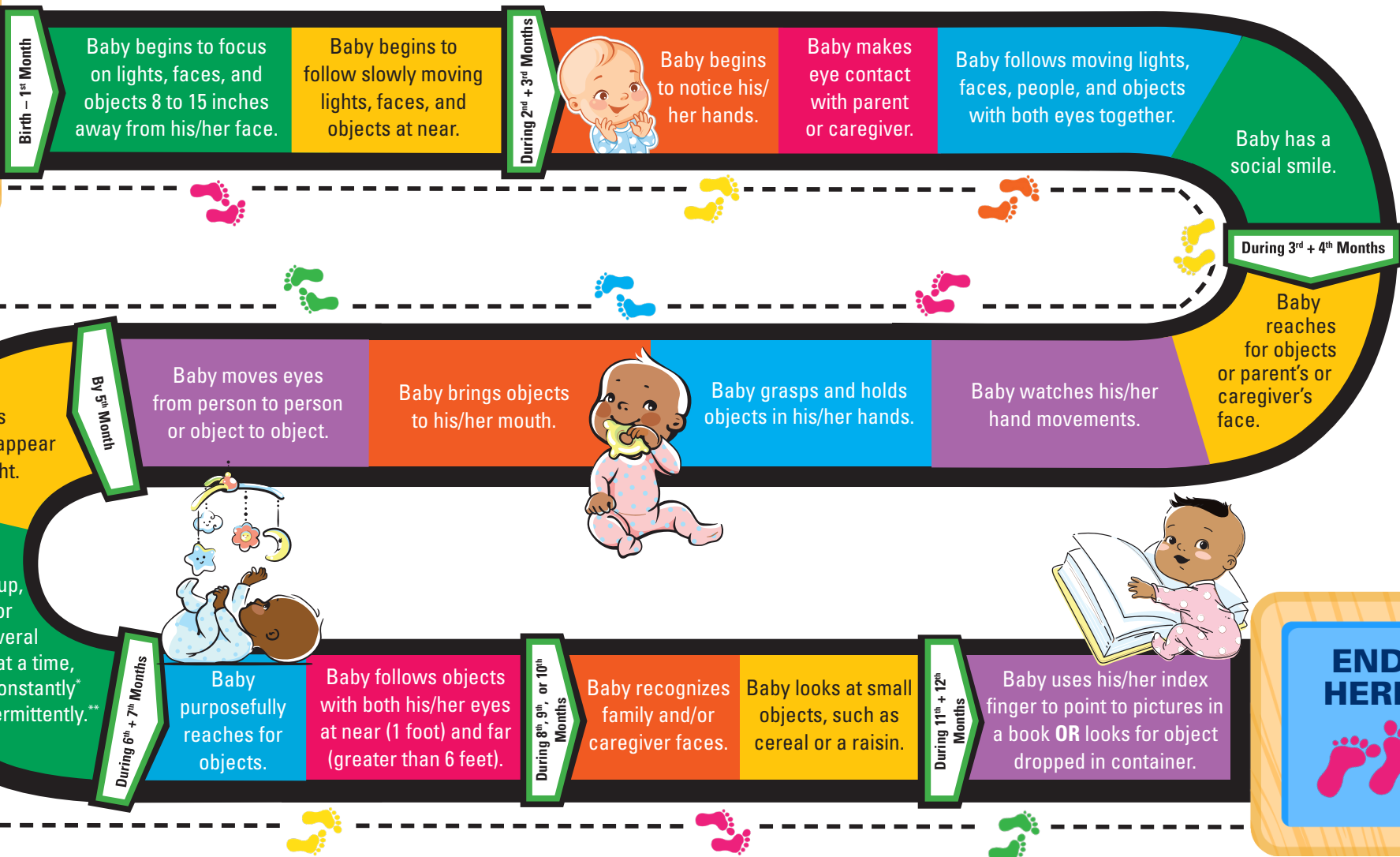


18 Vision Development Milestones From Birth to Baby's First Birthday



Milestones can vary by 6 weeks (except that baby's eyes should appear straight by the 5th month).
If your child is not meeting milestones, please talk with your child's primary health care provider.

**START
HERE**



**END
HERE**

*Constantly and constant means the misalignment is present all the time and could be up, down, in, or out. **Intermittently and intermittent means an eye turns in, out, up, or down, only for a short time.



"Small Steps for Big Vision" is an initiative of the National Center for Children's Vision and Eye Health at Prevent Blindness (www.nationalcenter.preventblindness.org).
For more information, contact: info@preventblindness.org

This project is supported by the Health Resources and Services Administration (HRSA) of the U.S. Department of Health and Human Services (HHS) as part of an award totaling \$300,000 with 5% financed with non-governmental sources. The contents are those of the author(s) and do not necessarily represent the official views of, nor an endorsement, by HRSA, HHS, or the U.S. Government. For more information, please visit HRSA.gov.