



# Building a Strong Vision Health System of Care: Components and Resources

An educational presentation from the *Year of Children's Vision* initiative



# About the *Year of Children's Vision* initiative

- ✎ The goal of YOCV is to provide national guidance to staff of Head Start, Early Head Start and other early childhood programs to standardize approaches to vision screening, improve follow-up for eye care, provide family friendly educational information and consult with some of the nation's leading pediatric eye care providers to ensure best practices.
- ✎ YOCV was initiated by and is supported by leading national vision health organizations, for a complete list and other resources go to:  
<http://nationalcenter.preventblindness.org/year-childrens-vision>



# About today's presentation...

- ☞ The goal of today's presentation is to help program staff develop and implement a strong, 12-component Vision Health System of Care, even when vision screening is conducted by volunteers or outside agencies. This system of care includes critical questions to answer about vision development and ways parents can be engaged in follow-up care.
- ☞ After this session you will be able to:
  1. Describe the 12 components that support a strong Vision Health System of Care
  2. Describe 3 critical components to monitor when outside volunteers screen vision of your children
  3. Describe 3 critical components of your vision health program to measure annually
  4. Describe 3 vision resources available from the Year of Children's Vision and the National Center for Children's Vision and Eye Health at Prevent Blindness



At the end of the day..



Join us here at 4 pm for roundtable  
discussions with the presenters.

# Your presenters

## ☞ P. Kay Nottingham Chaplin, Ed.D

- Director - Vision and Eye Health Initiatives for The Good-Lite Company and School Health Corporation
- Member – National Advisory Committee and Education Subcommittee to the National Center for Children’s Vision and Eye Health at Prevent Blindness



## ☞ Kira Baldonado, BA

- Director, National Center for Children’s Vision and Eye Health at Prevent Blindness



# Presenter Disclaimer

P. Kay Nottingham Chaplin, Ed.D

- ✎ Employed by Good-Lite
- ✎ Consultant to School Health Corporation

Kira Baldonado, BA

- ✎ This presenter has no conflicts of interest to declare. The opinions expressed in this presentation are solely those of the presenter.





# Madison's Giraffes



more awesome pictures at [THEMETAPICTURE.COM](http://THEMETAPICTURE.COM)



# Madison's Giraffes





# Key Considerations “What makes a great vision health program for children like Madison?”

1. Support Your Families
2. Employ an evidence-based approach to vision screening
3. Ensure effective communication among all stakeholders
4. Assess your competency- are you making a difference?

Each “key consideration” includes multiple components that should be attended to.



## **Key Considerations:**

- 1. Components of a Strong Vision Health System that Support Madison's Family**

# Ensure that all parents/caregivers receive educational material, which respects cultural and literacy needs

- ☞ We have vision health information in all **native languages** of the families that we serve.
- ☞ We discuss the importance of healthy vision as a part of proper child development **in the general health information** provided by our program.
- ☞ We provide parents with **easy-to-understand\*** information on the visual milestones for children at all stages of life.
- ☞ Our **parent/and or health advisory committee(s)** have reviewed our vision health information for, content, clarity of instruction, cultural literacy, and **reading level** .
- ☞ We provide health information to parents of **children with special healthcare needs** that describe their increased risk for vision problems.
- ☞ We have active **Parent and Health Advisory Committees**



# Ensure that parent/caregiver's written approval for vision screening includes permission to...

- ✎ **Share screening results** with the child's eye care provider and primary care provider.
- ✎ **Receive eye exam results** for our program's records.
- ✎ **Talk with the child's eye care provider** for clarification of eye exam results and prescribed treatments.
- ✎ Share eye exam results with the child's **primary care provider**.

Be aware of state specific laws around health information.





# Provide parents/caregivers with vision screening results in easy-to-understand language

- ✎ Vision screening results are provided in both a **written and verbal** format to parents/caregivers.
- ✎ We provide vision screening referral information and follow up to care information in the family's **native language**.
- ✎ Our vision screening referral information is written at a **4th to 6th** grade reading level.
- ✎ The follow-up actions for families are clearly described and parents are advised to act within a **specified timeframe**.



# Link parents/caregivers to an eye examination

- ✎ We have an updated **list of area eye care providers** who serve children.
- ✎ We provide access to programs for **free or low cost vision services**.
- ✎ We create opportunities for local eye care providers to **speak** with all families we serve.
- ✎ We **facilitate families' access to health insurance** coverage for which their child may qualify.
- ✎ We have **an eye care professional with vision screening experience** on our Health Advisory Committee.



# Resources to Support Madison's Family

## Financial Assistance Information

### Association of Schools and Colleges of Optometry

6110 Executive Boulevard, Suite 510  
Rockville, Maryland 20852  
Phone: (301) 231-5944  
Fax: (301) 770-1828  
[www.opted.org](http://www.opted.org)

Many optometry schools offer low-cost care to people willing to be treated by supervised students. They may also provide free care to people who join research studies.

### Chronic Disease Fund

6900 N. Dallas Parkway, Suite 200  
Plano, TX 75024  
Toll-free Patient Info: (877) 968-7233  
Main: (972) 608-7141  
[www.cdfund.org](http://www.cdfund.org)

Chronic Disease Fund® is an independent 501(c)(3) non-profit charitable organization helping patients with chronic disease, cancers or life-altering conditions obtain the expensive medications they need.

Fax: (415) 561-8567

[www.eyecareamerica.org](http://www.eyecareamerica.org)

EyeCare America provides eye care to US citizens and legal residents through volunteer ophthalmologists (Eye M.D.s) at no cost to those who qualify. Go to the website or call to find out if you qualify for eye care. EyeCare America facilitates eye care for U.S. citizens or legal residents who are without an Eye M.D. and who do not belong to an HMO or do not have eye care coverage through the Veterans Administration.

- Those who are age 65 or older and who have not seen an EyeMD in three or more years may be eligible to receive a comprehensive, medical eye exam and up to one year of care at no out-of-pocket cost for any disease diagnosed during the initial exam. Volunteer ophthalmologists will waive co-payments, accepting Medicare and/or other insurance reimbursement as payment in full: patients without insurance receive this care at no charge.



211 West Wacker Drive  
Suite 1700  
Chicago, Illinois 60604  
800.331.2020  
[PreventBlindness.org](http://PreventBlindness.org)



Referral for an eye examination

Date: \_\_\_\_\_ Primary language: \_\_\_\_\_ Zip: \_\_\_\_\_  
City: \_\_\_\_\_ State: \_\_\_\_\_  
Email: \_\_\_\_\_  
City: \_\_\_\_\_ State: \_\_\_\_\_ Zip: \_\_\_\_\_  
If mobile, text messages allowed (Y/N): \_\_\_\_\_  
If mobile, text messages allowed (Y/N): \_\_\_\_\_

Patient information: Name (First, M.I., Last): \_\_\_\_\_ Sex (M/F): \_\_\_\_\_  
Birth date (MM/DD/YYYY): \_\_\_\_\_ Grade: \_\_\_\_\_  
Parent or guardian: \_\_\_\_\_  
Mailing address: \_\_\_\_\_  
Primary phone ( ): \_\_\_\_\_  
Secondary phone ( ): \_\_\_\_\_  
Phone number ( ): \_\_\_\_\_

Referring primary health care provider information:  
Office name: \_\_\_\_\_ Vision screening conducted by: \_\_\_\_\_  
Date of referral: \_\_\_\_\_  
Reason for referral (check all that apply):  
☐ Visual acuity  
☐ Ocular alignment  
☐ Pupillary reflex  
☐ Retinal reflex  
☐ Ocular structure of early onset vision problems  
☐ Family history of early onset vision problems  
☐ Developmental delay/diagnosis condition (describe): \_\_\_\_\_  
☐ Other (describe): \_\_\_\_\_

Report from the examining eye doctor:  
Date of eye examination: \_\_\_\_\_  
(1) Uncorrected visual acuity: \_\_\_\_\_  
(2) Corrected visual acuity: \_\_\_\_\_  
Right Left Right Left

Check if appropriate:  
☐ Medical: \_\_\_\_\_  
☐ Contact Lenses \_\_\_\_\_  
☐ Other \_\_\_\_\_  
☐ Contact Lenses prescribed \_\_\_\_\_  
☐ Constant wear \_\_\_\_\_  
☐ Hear vision only \_\_\_\_\_  
☐ Distance vision only \_\_\_\_\_

Visual field restrictions:  
☐ Amblyopia \_\_\_\_\_  
☐ Missed amblyopia detected \_\_\_\_\_  
☐ Hearing aid may be difficult \_\_\_\_\_  
☐ Preferential seating needed \_\_\_\_\_  
☐ Low vision evaluation/assistance recommended \_\_\_\_\_  
☐ Re-evaluation of vision advised \_\_\_\_\_  
within 12 months \_\_\_\_\_  
Other: \_\_\_\_\_

Eye care provider contact information:  
ECP Name: \_\_\_\_\_ Phone: \_\_\_\_\_ Fax: \_\_\_\_\_  
Address: \_\_\_\_\_ City: \_\_\_\_\_ State: \_\_\_\_\_ Zip: \_\_\_\_\_

Eye care provider, please return completed form to:



## 你知道嗎 —

兒童通常不會抱怨眼睛有問題。眼科疾病如果不及時治療，就可能導致永久失明。

### 你能做什麼：

1. 在孩子玩、讀書、看電視或其他人的時候觀察孩子。如果有什麼異常情況，要及時與孩子的兒科醫生討論。
2. 與醫生討論你家庭成員的眼科病史（例如弱視、斜視、使用眼藥水更難視力，或需要戴度數很高的眼鏡）。
3. 每次體檢時要詢問是否為孩子進行了眼科檢查。
4. 詢問每次眼科檢查的結果，並要明白是什麼意思。
5. 你孩子的醫生可能在眼科檢查後建議你去普爾科眼科醫生，來評估在檢查中發現的問題。如果是這樣，一定要去進一步檢查。
6. 在眼科檢查後，一定要將結果報告送回給孩子的醫生。你自己也要保存一份這個報告。

## 眼科疾病的症狀

許多兒童的眼科疾病不能夠被發現。但是有些時候會有如下一些症狀出現。如果你注意到有這些症狀，就要聯絡你的醫生：

### 斜視



### 白瞳症



上臉下垂，眼皮下垂，擋住了部分視線。



## Parent Education



<http://nationalcenter.preventblindness.org/resources-2>



**Audience Engagement: At what point in your program do you educate parents about their child's vision health?**



## Key Considerations:

2. Employ an evidence-based approach to vision screening

# Vision screening

- ✎ Two types of vision screening:
  - Optotype-based
  - Instrument-based
    - Or combination
- ✎ Optotype = name of shape, letter, or number to identify
- ✎ Optotype-based screening measures visual acuity
- ✎ Instrument-based screening measures for presence of amblyopia risk factors:
  - Significant refractive error
  - Asymmetry of refractive error
  - Misalignment of eyes
  - Presence of cataract



# Screen vision with age-appropriate and evidence-based tools and procedures, including optotypes (pictures) and/or instruments

- ✎ If we use devices for instrument-based screening, the devices include software upgrades recommended by the National Center for Children's Vision and Eye Health at Prevent Blindness.
- ✎ If we use devices, the referral criteria is set according to recommendations from the National Center for Children's Vision and Eye Health at Prevent Blindness or our local eye care providers.



- ✓ Welch Allyn SureSight
  - ✓ Calibrated every 18 months
  - ✓ Set in child mode
  - ✓ Set in “minus” calibration until you can upgrade to recent software
  - ✓ Upgrade software to Version 2.25



- ✓ PediaVision Spot
  - ✓ Updated with most recent software
  - ✓ Discuss referral criteria with local eye care professional



- ✓ Plusoptix S09, S12R, or S12C
  - ✓ Updated with most recent software
  - ✓ Discuss referral criteria with local eye care professional





# Have an age-appropriate and evidence-based test of visual acuity as a backup to instrument-based vision screening

∞ If we use devices, we have an age-appropriate and evidence-based test of visual acuity as a backup if:

- The device malfunctions,
- We forgot to charge the batteries, or
- We cannot achieve a reading.

∞ Head Start children in Vision in Preschoolers Study

- Could “nearly always” participate in instrument-based screening if unable to participate in optotype-based screening, and vice versa

Vision in Preschoolers Study Group. (2007). Children unable to perform screening tests in Vision in Preschoolers Study: Proportion with ocular conditions and impact on measure of test accuracy. *Investigative Ophthalmology & Visual Science*, 48(1), 83-87. Retrieved from <http://www.iovs.org/content/48/1/83.full.pdf+html>



# Screen vision with age-appropriate and evidence-based tools and procedures, including optotypes (pictures) and/or instruments

- ☞ If we do optotype-based vision screening as a backup to instrument-based screening, we use an “eye chart” that meets national/international design guidelines for standardized eye charts, an approved optotype booklet, or a single, surrounded LEA Symbols booklet or system.
- ☞ If we use an “eye chart” as a test of visual acuity for optotype-based screening, the eye chart meets national/international design guidelines for standardized eye charts.



# Single, Surrounded LEA Symbol

- Research supports using single, LEA Symbols optotypes surrounded with bars at 5 feet for children aged 3 to 5 years



Vision in Preschoolers (VIP) Study Group. (2009). Findings from the Vision in Preschoolers (VIP) Study. *Optometry and Vision Science*, 86(6), 619-623.



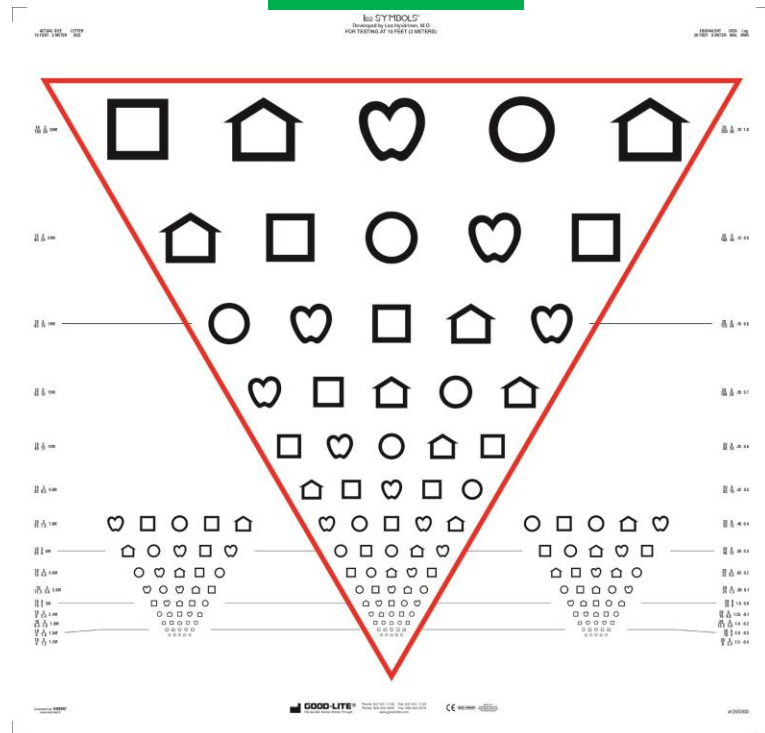




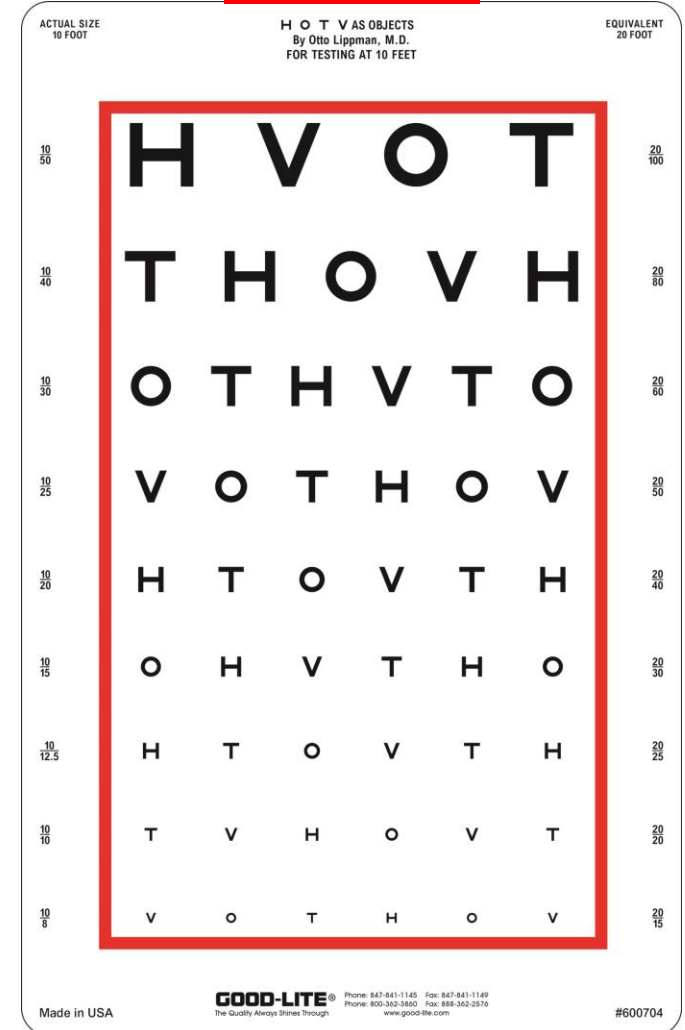
# ∞ Tips:

- Line outside optotypes = inverted pyramid, NOT rectangle
- 20/32 vs. 20/30
- 10 feet vs. 20 feet

YES

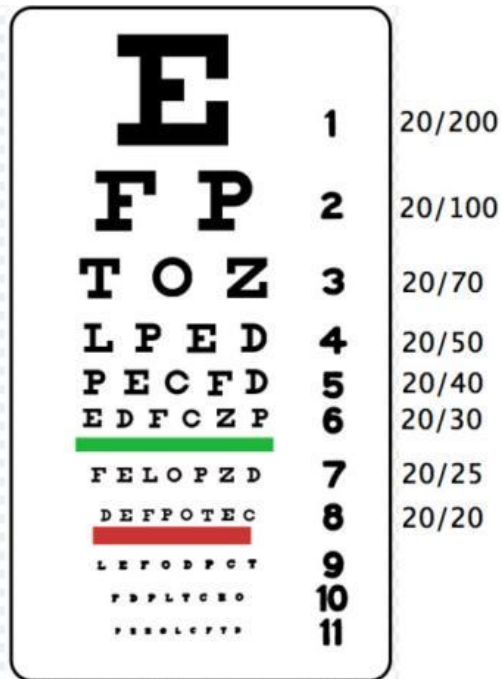


NO

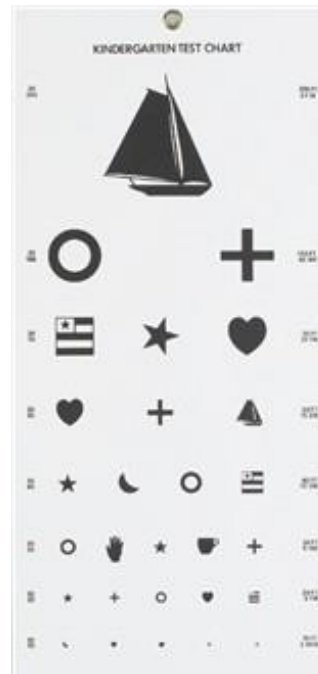


# Ok or not OK?

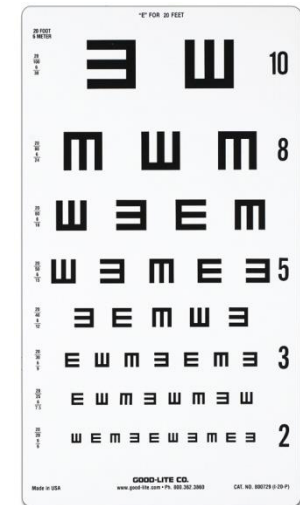
Snellen Letters



Kindergarten Test Chart



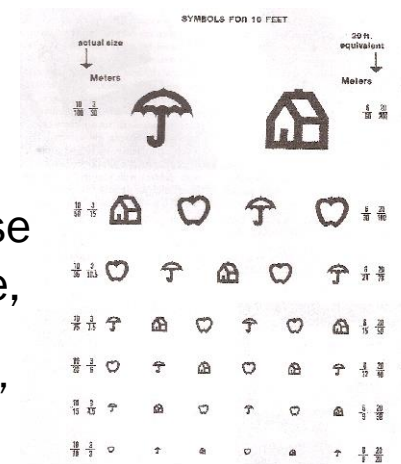
Tumbling E



Allen Pictures



Lighthouse or "House, Apple, Umbrella"



# Screen vision with age-appropriate and evidence-based tools and procedures, including optotypes (pictures) and/or instruments

- ✎ We use appropriate occluders when screening the vision of our children with tests of visual acuity.



# Ok or not OK?



# Screen vision with age-appropriate and evidence-based tools and procedures, including optotypes (pictures) and/or instruments

- ✎ If an outside person or agency screens the vision of our children, we have a process to review tools used.
- ✎ We follow national guidelines for when to refer children.





# Follow national referral and rescreening guidelines

## Example: 2003 Policy Statement from:

- American Academy of Pediatrics
- American Association of Certified Orthoptists
- American Association for Pediatric Ophthalmology and Strabismus
- American Academy of Ophthalmology

## Example: Ages 3-5 years:

- Majority of optotypes (3 of 5) on 20/40 line with both eyes

## Example: Ages 6 years and older

- Majority of optotypes (3 of 5) on 20/30 (20/32) line with both eyes

Eye examination in infants, children, and young adults by pediatricians. (2003). *Pediatrics*, 111(4), 902-907.





# Rescreen or refer difficult-to-screen (untestable) children

- ✎ We follow national guidelines for when to rescreen children.
- ✎ If a child will not participate in screening, we make another attempt as soon as possible, but within 6 months.
- ✎ If we are unsuccessful with the first attempt at screening, we rescreen the child immediately using a different vision screening tool (test of visual acuity or an instrument) within 6 months.
- ✎ If a child is untestable on the 2<sup>nd</sup> attempt, we refer the child for an eye exam performed by an optometrist or an ophthalmologist skilled in treating young children.



# Do not “wait until next year” to rescreen

- ✎ Untestable children were 2x as likely to have vision problems than those who passed vision screening.
- ✎ If you have reason to believe that the child may perform better on another day, consider rescreening the child within 6 months.
- ✎ Otherwise, refer untestable children for an eye exam with pediatric eye care professional skilled in treating young children.

Vision in Preschoolers Study Group. (2007). Children unable to perform screening tests in Vision in Preschoolers Study: Proportion with ocular conditions and impact on measure of test accuracy. *Investigative Ophthalmology & Visual Science*, 48(1), 83-87.

American Academy of Ophthalmology Pediatric Ophthalmology/Strabismus Panel. (2012). Preferred Practice Pattern® Guidelines. Amblyopia. San Francisco, CA: American Academy of Ophthalmology. Retrieved from <http://one.aao.org/preferred-practice-pattern/amblyopia-ppp--september-2012>



# Include vision screening training for your staff that leads to state and/or national certification in evidence-based screening procedures

- ☞ We follow the National Center for Children's Vision at Eye Health at Prevent Blindness's vision screening training program, we receive face-to-face training from our local Prevent Blindness affiliate program, or we participate in a state-approved training program.
- ☞ We ensure new staff members are formally trained within 3 months of employment through the National Center for Children's Vision and Eye Health at Prevent Blindness, our Prevent Blindness affiliate program, or a state-approved training program.
- ☞ We “refresh” training every 3 to 5 years through the National Center for Children's Vision and Eye Health at Prevent Blindness, our local Prevent Blindness affiliate, or a state-approved training program.



# Establish and follow policies for screening or direct referral to an eye care provider for children with special needs

- ✎ We use guidelines from the National Center for Children's Vision and Eye Health at Prevent Blindness for when to bypass vision screening and move directly to eye exam.
- ✎ We have a process to indicate in a child's files that the child met national guidelines to bypass vision screening and move directly to eye exam.
- ✎ We have a professional relationship with a Teacher of the Visually Impaired (TVI) from the local school system to answer questions about how to support the visual health of our children with special healthcare needs.



# Resources to Ensure Proper Screening for Madison

## Children's vision screening training and certification

Prevent Blindness America has the only national program for training and certifying vision screeners.

Our children's vision screening training and certification program ensures consistent, highly effective screening. Prevent Blindness' professional advisors recommend screening tests designed to accurately detect children's vision problems, and the certification program prepares screeners to do the best possible job.

Why is vision screening for children so important? ►

What tests are included in the children's vision screening? ►

What's involved in the training? ►

Join Prevent Blindness America's 35,000 volunteers, Become a vision screener! ▼

Request information about vision screening training and certification or call ☎ 1-800-331-2020 .



No\* - Kindergarten  
"Sailboat" Chart



No - "Snellen" Chart



Yes - LEA Symbols



Yes - Sloan Letters

## Chart Design Recommendations From:

American National Standards Institute, Inc. (ANSI Z80.21-1992 (R2004)-approved May 2010)

World Health Organization (WHO) – 2003

International Council of Ophthalmology (ICO) – 1994

National Academy of Sciences – National Research Council (NAS-NRC) – 1980

1. Optotypes of almost equal legibility (one optotype should not be easier to identify than another on the same line).
2. Same number of optotypes per line (5 per WHO, 10 per NAS-NRC, at least 5 per ICO [some charts may have 4 on top line to accommodate chart size]).
3. Spacing between optotypes = width of optotypes on that line.
4. Spacing between rows = height of optotypes on next line down (WHO).
5. Geometric progression of optotype sizes of 0.1 log units.
6. Black optotypes on white background.

Prevent Blindness Certified Screener

P. Kay Nottingham Chaplin, Ed.D. – 304-906-2204; 304-376-9988 – [kay@good-lite.com](mailto:kay@good-lite.com)

Good-Lite (847-841-1145 – [www.good-lite.com](http://www.good-lite.com))

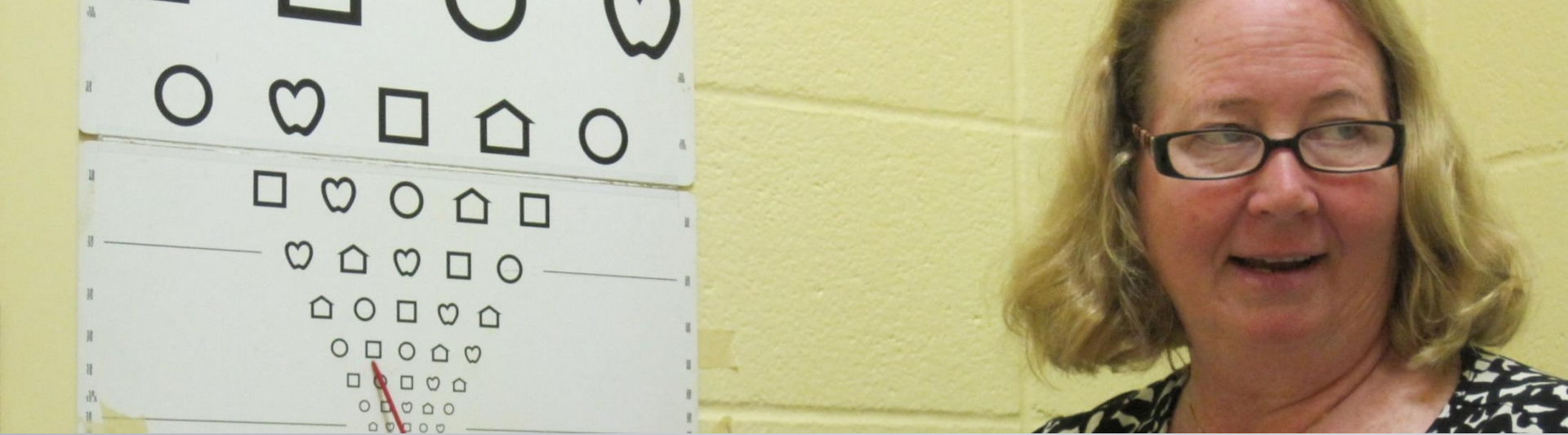
School Health (866-323-5465 – [www.schoolhealth.com](http://www.schoolhealth.com))

\*A screening test's accuracy in separating children with normal vision and children who require further vision care requires knowing the test's sensitivity and specificity for detecting targeted vision disorders. Vision in Preschoolers Study, Optom Vis Sci. 2010;87:87-95.

Sensitivity and specificity info unknown for "sailboat chart".

[www.good-lite.com](http://www.good-lite.com)

**GOOD-LITE®** 1.800.362.3860  
1.888.362.2576 Fax



**Audience engagement: How do you  
train in vision screening practices?**



## **Key Considerations:**

**3. Ensure effective communication among all stakeholders**

# Obtain eye exam results for your files

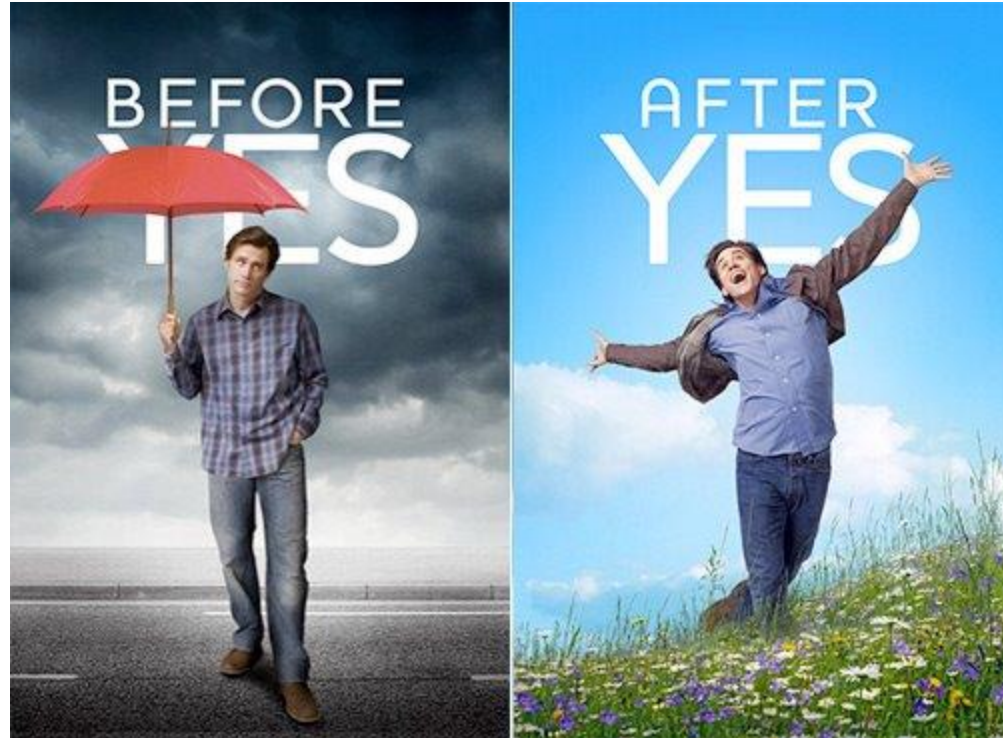
- ☞ We use a reminder system to monitor child files to determine whether we received eye exam results from the eye care provider.
  - We use the reminder system to contact the eye care provider if eye exam results are not received within 1 month of the eye exam.
- ☞ If eye exam results are not received within 1 month of the eye exam, we have a process to systematically request eye exam results.
  - If eye exam results are not received after 3 systematic contacts, we stop the process and indicate in child files that eye exam results could not be obtained.



# Obtain eye exam results for your files

☞ If we see a pattern of challenges receiving eye exam results from specific eye care providers, we contact the eye care provider to brainstorm ways to make it easier to receive eye exam results.

☞ We can report outcome data on completed referrals.



# Send a copy of eye exam results to the child's primary care provider

- ✎ We have a system in place to send (mail, fax, e-mail) a copy of eye exam results to children's primary care providers.
- ✎ We indicate in child files the date eye exam results went to children's primary care providers.
- ✎ We indicate in child's file if we cannot obtain a copy of eye exam results to send to child's primary care provider.





# Ensure that the eye doctor's treatment plan is followed

- ☞ We contact a child's eye care provider if we do not understand the eye exam results or treatment plan.
- ☞ We review vision treatment plans quarterly to help ensure parents schedule and attend upcoming eye care provider follow-up visits.
- ☞ We have a process for contacting the parent if a child does not wear prescribed glasses or a patch.
- ☞ We have a process for alerting a child's eye care provider if the child does not wear prescribed glasses or a patch.



# Ensure that the eye doctor's treatment plan is followed

- ✎ We have resources to share with parents if their children refuse to wear prescribed glasses.
- ✎ We conduct a sensitive child- and family-centered assessment to identify barriers to following the prescribed vision treatment plan.





# Resources to Ensure Communication Among Madison's Stakeholders



Tips for Wearing Eye  
Glasses

VS Referral  
Documents



The Eye Patch Club

<http://nationalcenter.preventblindness.org/resources-2>





**Audience engagement: How engaged are you in a child's vision treatment plan?**

## Key Considerations:

4. Assess your competency- are you making a difference?

# Create and implement a system for following-up with parents/caregivers to help ensure that the eye exam occurs.

- ✎ We conduct follow-up calls to families **within a set time\*** after a vision screening referral.
- ✎ We provide **electronic reminders** (text or email).
- ✎ We **require** a copy of a report from a primary care or eye care provider.
- ✎ We provide vision **accommodations** for children with a diagnosed vision problem.
- ✎ We provide a **parent peer-to-peer health support program** to families.
- ✎ We have **treatment plans** for vision in place for children who have been prescribed care by an eye care provider.



# Evaluate the effectiveness of your vision health program annually

- ✎ We **compare screening results to eye exam** outcomes.
- ✎ We ensure that the certifications for all trained vision screeners **are current**.
- ✎ We **review all vision screening tools** annually to ensure they are in good working order and updated.
- ✎ We **review our vision health program results** annually with our parent and health advisory committees.
- ✎ We **report our end-of-year data** to health, education, and community stakeholders.



# Resources to Ensure Competency

**12-Components of a Strong Vision Health System of Care**

**Annual Vision Health Program Evaluation Checklist**

Year of Children's Vision

Evaluation Date: \_\_\_\_\_ Completed By: \_\_\_\_\_

Instructions: Review each component described below. Select the "Yes", "No", or other response that best describes your vision health program as it currently operates. Please note comments in the area indicated. Once you have responded to the questions in each of the components proceed to the "Vision Health System Action Plan" located on page 7 to identify areas for attention or improvement in your program.

- Our program ensures that all parents/caregivers receive educational material, which respects cultural and literacy needs, about the importance of:
  - Good vision for their child now and in the future.
  - Scheduling and attending an eye exam when their child does not pass vision screening.
  - Increased risk for vision problems in defined high-risk populations.

Check Yes or No	Point of evaluation
<input type="checkbox"/> Yes <input type="checkbox"/> No	We have vision health information in <u>all</u> native languages of the families that we serve.
<input type="checkbox"/> Yes <input type="checkbox"/> No	We discuss the importance of healthy vision as a part of proper child development in the general health information provided by our program.
<input type="checkbox"/> Yes <input type="checkbox"/> No	We provide parents with easy-to-understand* information on the visual milestones for children at all stages of life. *Information is written at an appropriate reading level, provides graphics as well as descriptions, and has been tested for ease of understanding.
<input type="checkbox"/> Yes <input type="checkbox"/> No <input type="checkbox"/> N/A	Our parent/and or health advisory committee(s) have reviewed our vision health information for, content, clarity of instruction, cultural literacy, and reading level (4 <sup>th</sup> to 6 <sup>th</sup> grade level.)
<input type="checkbox"/> Yes <input type="checkbox"/> No	We provide health information to parents of children with special healthcare needs that describe their increased risk for vision problems.
<input type="checkbox"/> Yes <input type="checkbox"/> No	We have active Parent and Health Advisory Committees.

Notes: \_\_\_\_\_

\_\_\_\_\_ process for vision screening includes permission to: \_\_\_\_\_

<input type="checkbox"/> Yes <input type="checkbox"/> No	Receive eye exams
<input type="checkbox"/> Yes <input type="checkbox"/> No	Talk with the child's eye care provider
<input type="checkbox"/> Yes <input type="checkbox"/> No	prescribed treatments.

<http://nationalcenter.preventblindness.org/resources-2>



[www.familyvoices.org](http://www.familyvoices.org)

**National Center for  
Family Professional Partnerships**

<http://www.fv-ncfpp.org/>

**National Center for Medical Home  
Implementation**

<http://www.medicalhomeinfo.org/>







**Audience engagement: How do you improve  
parent engagement in follow-up care?**

# Madison's Giraffes - BEFORE





# Madison's Giraffes - AFTER



# In summary...

- ☞ To provide the best vision health program possible, remember that screening vision is only 1 piece.
- ☞ Download – and implement - the 12 Components of a Strong Vision Health System of Care.
  - [http://nationalcenter.preventblindness.org/sites/default/files/national/documents/12\\_component\\_vision\\_health\\_system\\_of\\_care%20%282%29.pdf](http://nationalcenter.preventblindness.org/sites/default/files/national/documents/12_component_vision_health_system_of_care%20%282%29.pdf)
- ☞ Evaluate your program.
- ☞ Develop an Action Plan for finding children like Madison..



# Questions for the presenters?



# Conclusion of today's presentation

Be on the lookout for more *Year of Children's Vision* resources:

YOCV website:

<http://nationalcenter.preventblindness.org/year-childrens-vision>

*Thank you for attending!*

P. Kay Nottingham Chaplin, Ed.D

[kay@good-lite.com](mailto:kay@good-lite.com) 304-376-9988

Kira Baldonado

[kbaldonado@preventblindness.org](mailto:kbaldonado@preventblindness.org)

312-363-6038

